

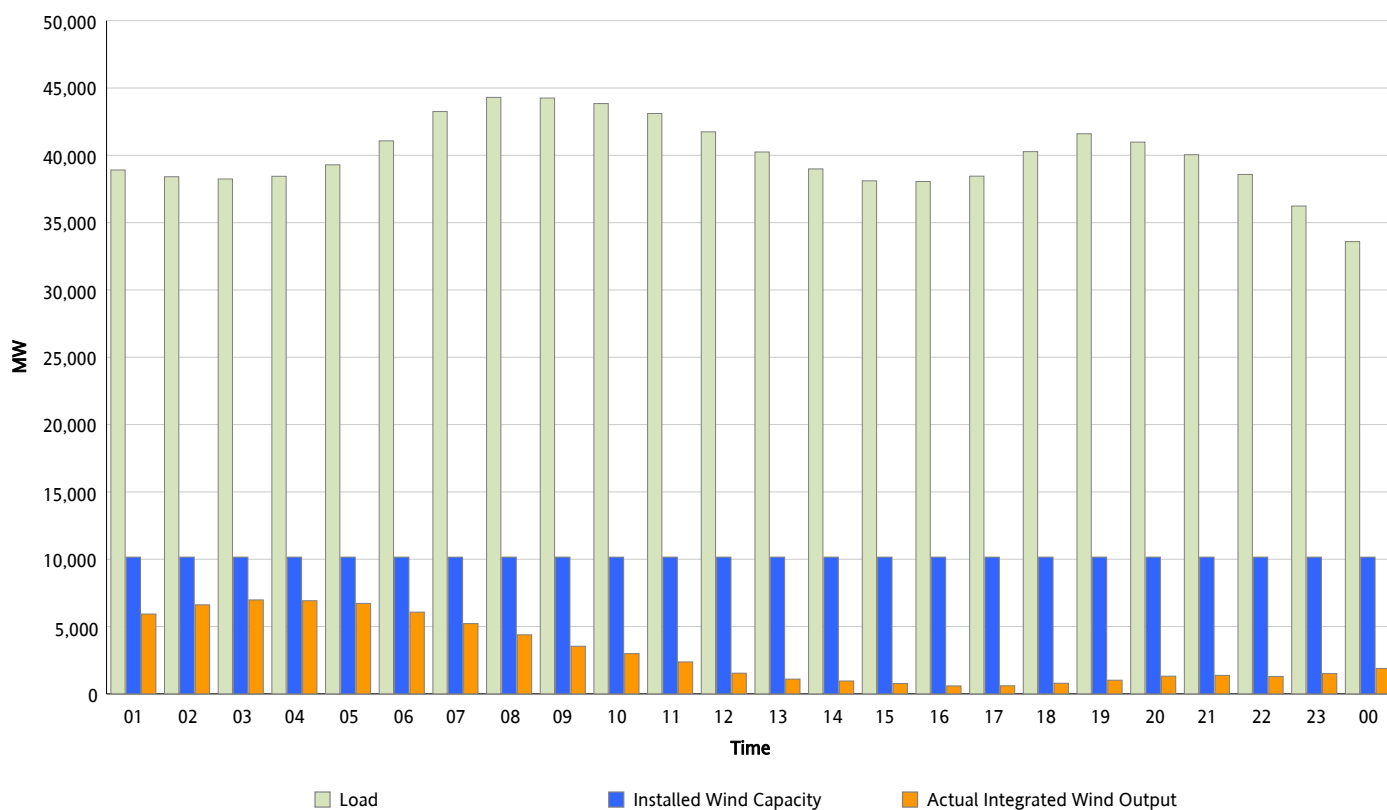


## ERCOT Grid Operations

### Wind Integration Report : 12/27/2012

Peak Load	44,304 MW
Load Peak Hour (HE)	08
Wind Over Peak	4,386 MW
Wind Record 12/25/12	8,638 MW
Max Wind Value*	7,054 MW
Wind Peak Time	02:41
Wind Integration %	18.47 %

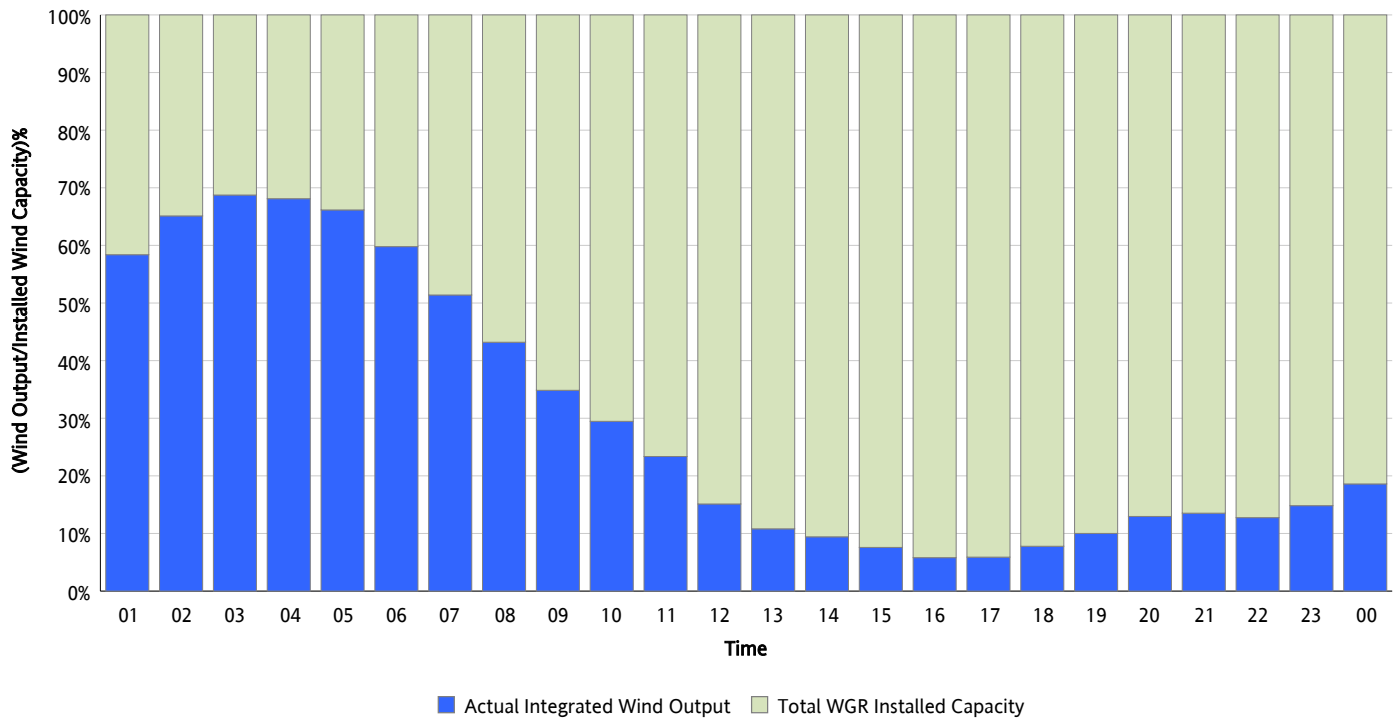
**Hourly Average Actual Load vs. Actual Wind Output**  
12/27/2012



\* Wind Record and Wind Max represent instantaneous values and the rest of the values are integrated over the hour

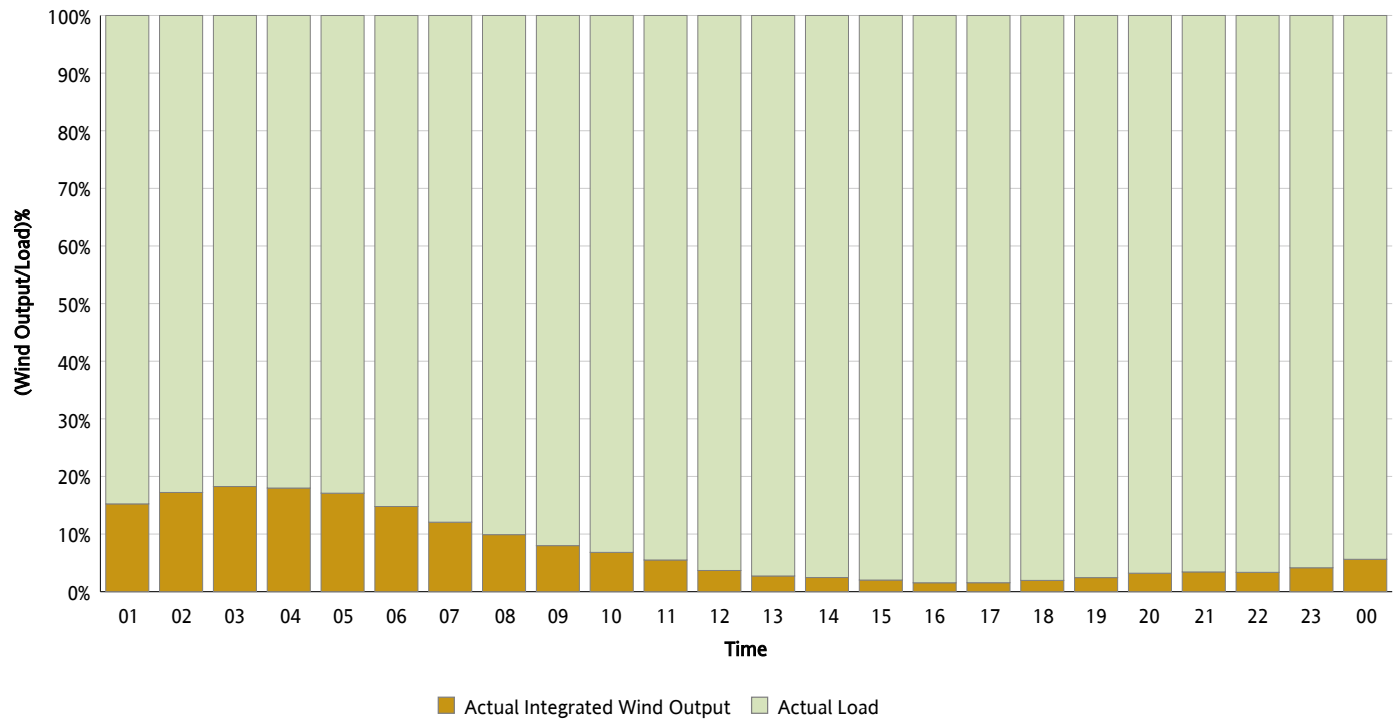
## Actual Wind Output as a Percentage of the Total Installed Wind Capacity

12/27/2012



## Actual Wind Output as a Percentage of the ERCOT Load

12/27/2012



## ERCOT Load vs. Actual Wind Output

12/20/2012 - 12/27/2012

